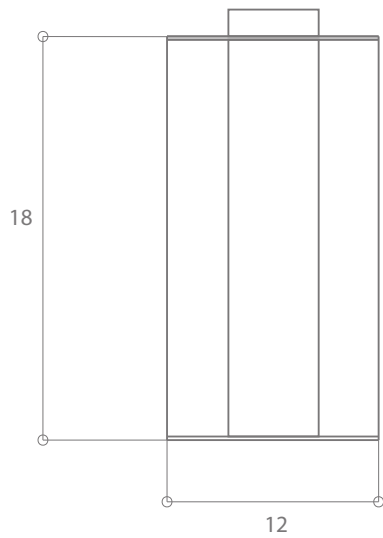
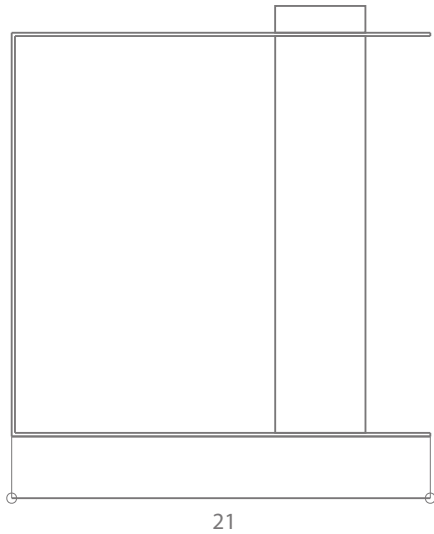




E S T U D I O P E R S O N A

WWW.ESTUDIOPERSONA.COM
INFO@ESTUDIOPERSONA.COM



PURU

The Puru Side Table embodies the elegance of simplicity, using only two elements represented by two distinct materials - wood and stainless steel. Inspired by the Japanese concept of 'Puru', meaning 'pool'.

MATERIALS	Polished stainless steel a solid wood column. Also available in Blackened Steel Brass Aluminum.
DIMENSIONS	21 L 12 W 18 H IN 53.5 L 30.50 W 45.75 H CM
WEIGHT	28lbs 12.7 kg
SHIPPING	Worldwide shipping. Quotes upon request.

CLEANING INSTRUCTIONS

Powder coated Buffed Aluminum

Powder coated Blackened Steel

Use a dry soft cloth to gently go over marks until clean. Do not apply pressure on persistent marks. Remove them using repeated gentle motions and by reapplying with some clean water if necessary. Please note all of our metal products have a clear powdercoat for further protection. Do not use brass cleaners or abrasive pads as they will remove the finish.

Polished Stainless Steel

Satin Brass

Burnished Brass

Use a dry soft dust cloth and gently go over marks until clean. Do not apply pressure on persistent marks. Remove them using repeated gentle motions and by reapplying with some water if necessary.

PLEASE NOTE: All of our metal products have a clearcoat for further protection.

handmade in los angeles

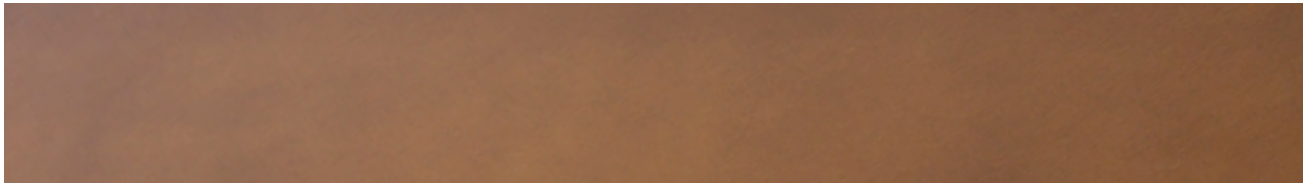
Every effort is made to ensure an accurate representation of product colours, finishes and dimensions, but due to the handmade nature of this product, there may be a slight variation. Colour swatches are for reference only; Estudio Persona cannot guarantee exact colour match for any product finishes. All designs are protected under copyright law. Estudio Persona holds the exclusive manufacturing and distribution rights worldwide. Copying will be prosecuted.

MATERIALS AND FINISHES



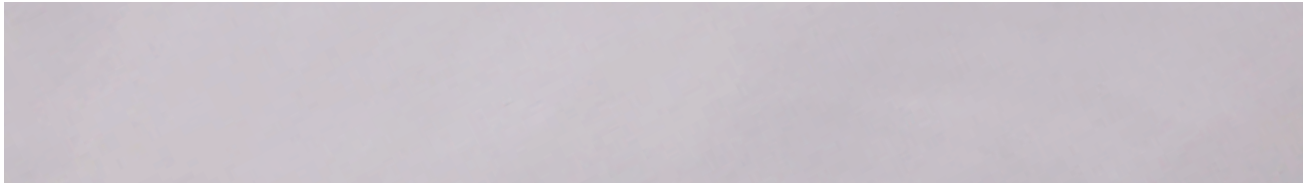
Polished Stainless Steel

POLISHED STAINLESS STEEL
Gauge: 14
Finish: Mirror-Polish



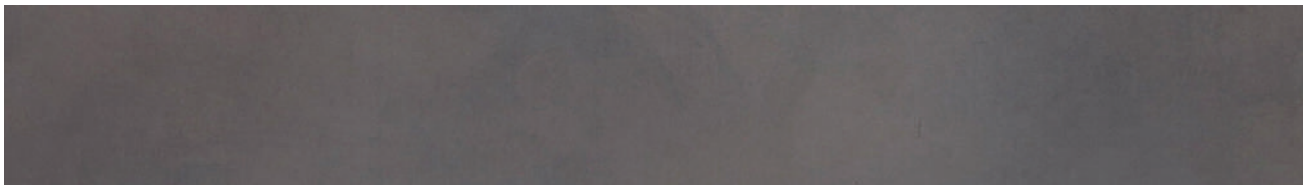
Satin Brass

BURNISHED BRASS
Gauge: 14
Finish: Clear Powdercoat



Buffed Aluminum

BUFFED ALUMINUM
Gauge: 14
Finish: Clear Powdercoat



Blackened Steel

BLACKENED STEEL
Gauge: 14
Finish: Clear Powdercoat