



ESTUDIOPERSONA

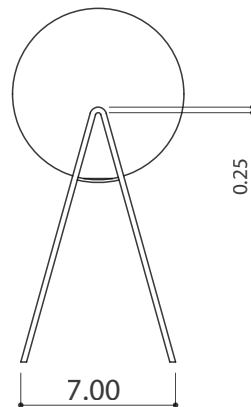
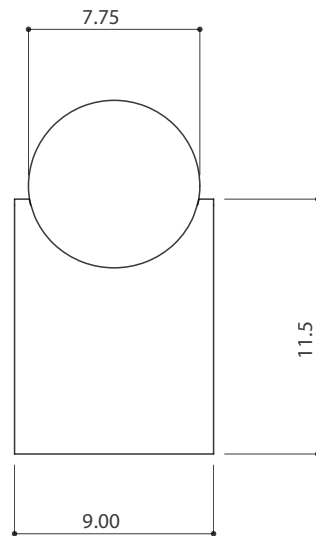
WWW.ESTUDIOPERSONA.COM  
INFO@ESTUDIOPERSONA.COM



Brass - Frosted glass



Blackened steel - Frosted glass



## LUNA LAMP

Table lamp in metal and hand blown glass.

### PRODUCT SPECIFICATIONS

MATERIALS	Steel   brass   hand blown glass
DIMENSIONS	9 W 7 D 16 H IN 22.86 D 17 W 40.50 H CM
WEIGHT	50 lbs   22.67kg
SHIPPING	Worldwide white glove shipping. Quotes upon request.
PREPACKED DIMENSIONS	12 W, 12 D, 12 H IN 30.50 D, 30.50 W, 30.50 H CM
LIGHTING SPECIFICATIONS	
BULB	2 x G4 1.0W - 12 AC/DC - 100 Lumens - 2700K
VOLTAGE	120V / 240V dimmable 0~10Vdc.
LED LIFESPAN	25.000 hours

### CLEANING INSTRUCTIONS

Before cleaning, lighting fixtures must be turned off and unplugged from main electricity. Whilst cleaning please take care and use the gloves provided.

#### *Powder coated Blackened Steel*

Use a dry soft cloth to gently go over marks until clean. Do not apply pressure on persistent marks. Remove them using repeated gentle motions and by reapplying with some clean water if necessary. Please note all of our metal products have a clear powdercoat for further protection. Do not use brass cleaners or abrasive pads as they will remove the finish.

#### *Satin Brass*

#### *Burnished Brass*

Use a dry soft dust cloth and gently go over marks until clean. Do not apply pressure on persistent marks. Remove them using repeated gentle motions and by reapplying with some clean water if necessary.

### handmade in los angeles

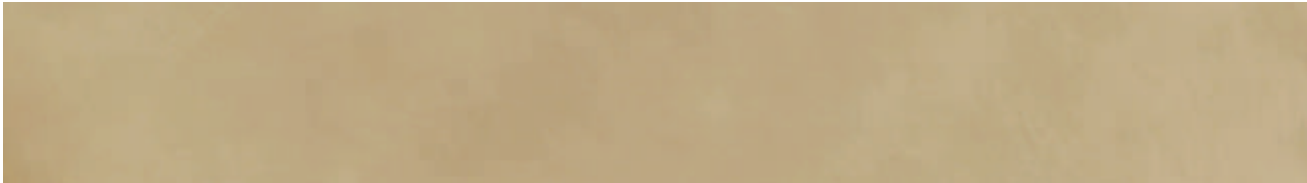
Every effort is made to ensure an accurate representation of product colours, finishes and dimensions, but due to the handmade nature of this product, there may be a slight variation. Colour swatches are for reference only; Estudio Persona cannot guarantee exact colour match for any product finishes. All designs are protected under copyright law. Estudio Persona holds the exclusive manufacturing and distribution rights worldwide. Copying will be prosecuted.

## MATERIALS AND FINISHES



*Blackened Steel*

*BLACKENED STEEL*  
*Gauge: 14*  
*Finish: Clear Powdercoat*



*Satin Brass*

*SATIN BRASS*  
*Gauge: 14*  
*Finish: Untreated*